



Julian
Ceramic Tile Inc

Lotus



Lotus offers a clean simplicity in today's most popular sizes and colours

Lotus



LBK44 – Black
4" x 4"
Sq.Ft: \$4.99 – Pc: \$0.52



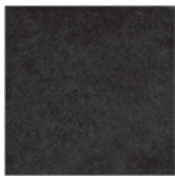
LBR44 – Brown
4" x 4"
Sq.Ft: \$4.99 – Pc: \$0.52



LGY44 – Grey
4" x 4"
Sq.Ft: \$4.99 – Pc: \$0.52



LIV44 – Ivory
4" x 4"
Sq.Ft: \$4.99 – Pc: \$0.52



LBK12 – Black
12" x 12"
Pc: \$3.99



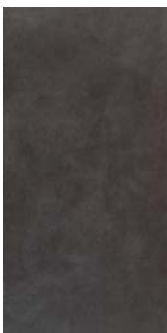
LBR12 – Brown
12" x 12"
Pc: \$3.99



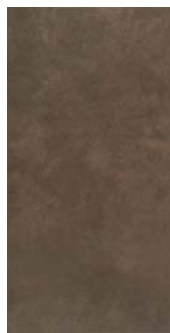
LGY12 – Grey
12" x 12"
Pc: \$3.99



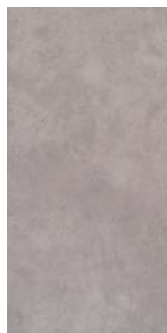
LIV12 – Ivory
12" x 12"
Pc: \$3.99



LBK1224 – Black
12" x 24"
Sq.Ft: \$4.99 – Pc: \$9.98



LBR1224 – Brown
12" x 24"
Sq.Ft: \$4.99 – Pc: \$9.98



LGY1224 – Grey
12" x 24"
Sq.Ft: \$4.99 – Pc: \$9.98



LIV1224 – Ivory
12" x 24"
Sq.Ft: \$4.99 – Pc: \$9.98



4" x 4" Packing: 108 pcs. (11.26 sq.ft.) per carton, 9.59 pcs./sq.ft Weight: 0.33 lbs. each, 35.64 lbs. per carton.

12" x 12" Packing: 13 pcs. (13 sq.ft.) per carton, 1 sq.ft/pc. Weight: 4.06 lbs. each, 52.78 lbs. per carton.

12" x 24" Packing: 6 pcs. (12 sq.ft.) per carton, 2 sq.ft/pc. Weight: 11.81 lbs. each, 70.86 lbs. per carton.

Porcelain Floor/Wall Tile



Frost Resistant



Water Absorption



PEI



Origin



Julian Ceramic Tile