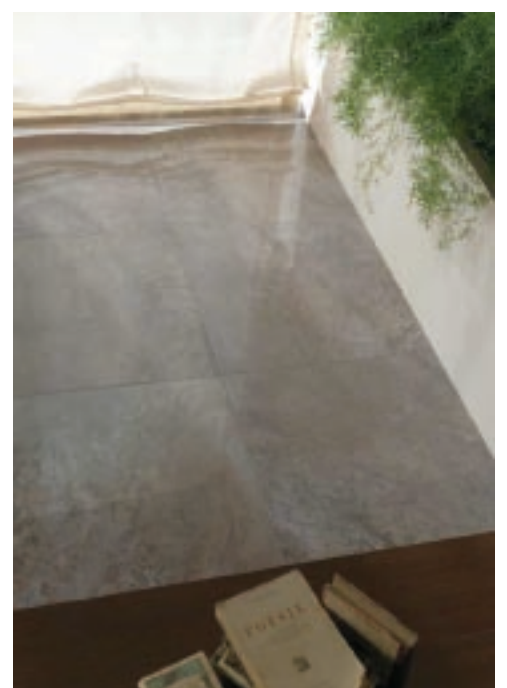
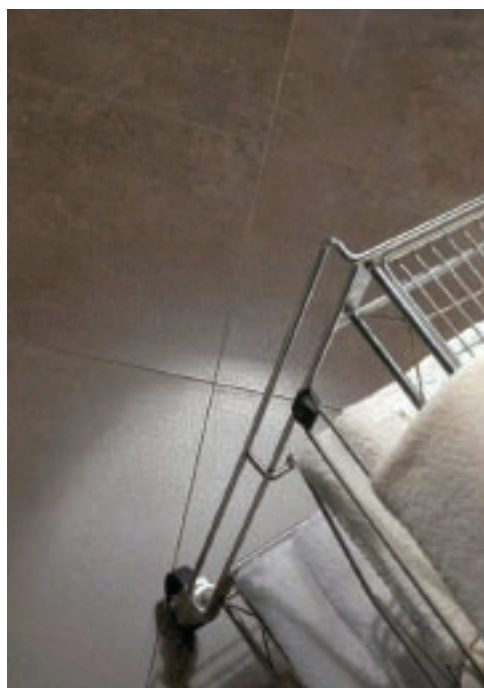


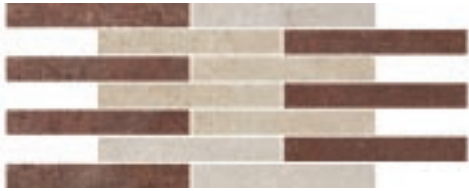


Alabastro



The timeless, classic elegance of natural stone in a technologically advanced polished and rectified porcelain tile. Simply stunning.

# Alabastro



AMIX1 - Light Mix  
1.3" x 9.5" - 9.5" x 19.25" mesh  
Sq.Ft: \$ 33.82 - Pc: \$42.95



AMIX2 - Dark Mix  
1.3" x 9.5" - 9.5" x 19.25" mesh  
Sq.Ft: \$ 33.82 - Pc: \$42.95



ASCA19 - Caramel  
19.25" x 19.25"  
Sq.Ft: \$ 11.95 - Pc: \$30.71



ASCO19 - Coffee  
19.25" x 19.25"  
Sq.Ft: \$ 11.95 - Pc: \$30.71



ASEB19 - Ebony  
19.25" x 19.25"  
Sq.Ft: \$ 11.95 - Pc: \$30.71



ASPE19 - Pearl  
19.25" x 19.25"  
Sq.Ft: \$ 11.95 - Pc: \$30.71



ASSI19 - Silver  
19.25" x 19.25"  
Sq.Ft: \$ 11.95 - Pc: \$30.71



**19.25 x 19.25 packing:** 4 pcs. (10.28 sq.ft.) per carton, 2.57 sq.ft./pc. Weight: 12.38 lbs. each, 49.52 lbs. per carton.  
**1.3 x 9.5 (9.5 x 19.25) packing:** 4 pcs. (5.08 sq.ft.) per carton, 1.27 sq.ft./pc. Weight: 5.78 lbs. each, 23.12 lbs. per carton.

Porcelain Floor/Wall Tile



Frost Resistant



Rectified



Environment Policy



Water Absorption



PEI



Origin



Julian Ceramic Tile